



Hygiene Meets Efficiency

The perfect balance of water efficiency and hygiene

In today's fast-paced world, restrooms are no longer just functional spaces—they are designed to provide convenience, comfort, and health benefits. Health faucets and angle valves are two key components that play a crucial role in ensuring water control, hygiene, and ease of use in our homes and offices.

Sloan health faucets and angle valves complement each other by providing complete water control in the restroom. While the health faucet ensures a hygienic, efficient water stream, the angle valve regulates the water flow, ensuring it is always at the right pressure.

Health Faucets

Sloan health faucets offer an ergonomic and simple to use hygienic solution. The chrome-plated sprayers are built with premium quality material to ensure long-time use, even in high traffic restrooms. The spray heads are versatile and flexible, with 1.0 m long stainless steel flexible hoses and mounting brackets.



Model: HF-10



Model: HF-60



Model: HF-70



Model: HF-80



Model: HF-90*



Model: HF-100*

Angle Valves

The angle valves are constructed with chrome-plated brass, feature sliding escutcheons for durability, and are easy to install. The valves support high water pressure, and the flow volume can be easily adjusted with the regulating cap. G 1/2" x G 1/2" threads and 3/8" threads. The angle valves have a noise level of < 20 dB (A) with a flow pressure of 3 bar. The flow rate of the angle valve is 15 Lpm on 3 bar pressure.



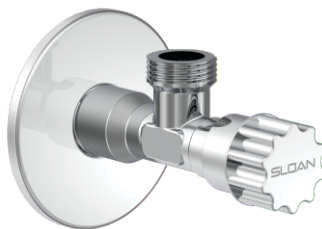
Model: AV-60



Model: AV-80



Model: AV-90



Model: AV-100

*Also available with controlled flow rate for high inlet pressure.

Contact your Sloan representative to learn more about our health faucets and angle valves.