

SLOAN[®]
Water Connects Us[®]

Sustainability and Wellness



Buildings use 13.6% of all potable water, which is roughly 15 trillion gallons of water per year.

Sloan's high-efficiency faucets, flushometers, and urinals can help cut down a building's water use by 30% or more.



Sloan is committed to the well-being of people and our environment.

The health and wellness of people are more paramount than ever before and intertwined with sustainable efforts. By championing innovation, sustainability, and product ingenuity, we have helped people worldwide lead healthier lives since the inception of our very first flushometer.

Our commitment to sustainability and wellness concentrates on three key areas: environmental impact, people's safety and health, and product transparency.

Sustainability and wellness highlights

Water saving since 1906

Our first Royal® Flushometer was invented as a water savings device. Today our faucets, flushometers, urinals, and showerheads continue to save water.

Reclaimed water

Reclaimed water flushometers use no potable water and help reduce your building's carbon footprint.

Health and Wellness

Products made transparently, free of hazardous materials, in sustainable fashion promote wellness in people's daily lives.

Visit sloan.com/sustainability-and-wellness to learn about Sloan's commitment to the environment and the people that live in it.

Our product innovations in sustainability and wellness

Handwashing outside the restroom

Mobile Handwashing Station

We've created a customizable hygiene station on wheels that pairs attractive design with the durability you expect from Sloan. It's a simple solution that helps your facility enhance health, wellness, and hygiene.

Learn more at sloan.com/mobile-handwashing-station



Programmed handwashing intelligence

BASYS® Guided Handwashing Faucet

The latest addition to our intelligent BASYS Faucet line offers self-guided instructions of the CDC's recommended five-step handwashing process, providing optimal hygiene for every user.

Learn more at sloan.com/basys-handwashing-faucet





Reclaim water in your facility

Royal® Reclaimed Water Flushometer

Engineered to withstand the harsh conditions of reclaimed water, our Royal Reclaimed Water Flushometer can help commercial facilities preserve thousands of gallons of potable water each year.

Learn more at sloan.com/royal-reclaimed-flushometer



Overhauled to be faster, quieter, and more energy efficient

Sloan Wall-mounted Hand Dryers

Sloan wall-mounted hand dryers aren't just quieter, they're also more energy efficient, hygienic with optional HEPA filtration, and environmentally friendly, proven by Environmental Product Declaration (EPD) reports.

Learn more at sloan.com/sloan-hand-dryers



Waterfree efficiency, and conventional functionality

Sloan Hybrid Urinals

Sloan Hybrid Urinals deliver unmatched performance while saving thousands of gallons of water every year. This innovative fixture combines a world-class, multi-patented urinal cartridge with our revolutionary Jetrinse® Solution Technology that will keep your urinals and drain lines clean, hygienic, odor-free, and clog-free.

Learn more at sloan.com/hybrid

Promoting people's well-being with thoughtful products

Designing spaces that adhere to the WELL Building Standard allows facilities to better serve the people inside. The WELL Building Standard also helps improve air and water quality, facilitates greater occupancy demand, and provides the satisfaction of creating environments built for a brighter, healthier future.



We care about the people that use our products.

What is the WELL Building Standard?

The WELL Building Standard is a rating system that focuses on how buildings affect human health and wellness. Launched in 2014, the WELL Building Standard has helped guide the design of thousands of buildings around the world, giving clear guidelines for creating spaces that keep people healthy and productive.

Why do WELL Building Standards matter?

The WELL Building Standard is the most robust standard for advancing health and well-being. Sloan has a range of products to help you achieve points to meet the standard and earn certification for your building.

How can Sloan products help your project?

Sloan has been a step ahead with decades of innovative solutions that provide hygienic restroom and handwashing accommodations that support effective handwashing, helping facilities obtain WELL credits in the W08 Hygiene Support criteria. In addition, with products like the Royal® Reclaimed Flushometer that help preserve non-potable water, facilities can also earn credits in the W09 Onsite Non-potable Water Reuse criteria. Select products have enhanced ingredient disclosures that are third-party verified to help earn WELL credits in the X07 Materials Transparency criteria. By disclosing our product makeup, we can help facility owners feel confident that guests aren't exposed to harmful materials and help them earn credits in the X01 Materials Restrictions criteria.

Ready to get WELL?

Giving your project the human advantage with a WELL certification can help your facility make more people feel at home and drive demand.

sloan.com/well-building-standard



Standardizing hygiene support and the transparency of materials

WELL provides the guidelines to create a high-performance building that focuses on promoting the health of people.

Sloan has hundreds of products across 8 categories that meet the WELL Building Standard

Flushometers



Faucets

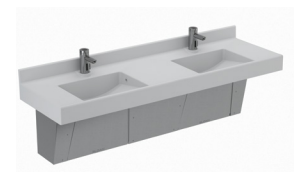


Soap Dispensers



For a full list of Sloan products that help attain WELL credits

[See pages 16-19](#)



WELL product highlight

Optima® EAF-275 Solar-powered Faucet is the perfect innovation for any high-end washroom. This product helps improve your workplace and meets the criteria to earn WELL credits. Shown on SloanStone® ELC-82000 Deluxe Lavatory Countertop Sink.

Passionately preserving the environment

The actions we take today to protect the environment can have a monumental impact tomorrow, and at Sloan, we're doing all we can to build a brighter future for everyone.



We're transparent about how our products are made through their entire life cycle.

What are Environmental Product Declarations?

An EPD is an objective, transparent report that communicates how much a product's composition impacts the environment across its entire life cycle.

EPDs provide information on a product's carbon footprint, acidification, depletion of fossil fuel, smog generation, and recycled content.

Why are EPDs important?

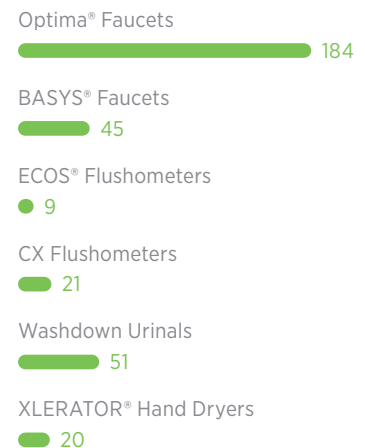
An EPD is like a nutrition label for a building product. Instead of identifying impacts like calories and daily recommended allowances, an EPD identifies life cycle impacts like global warming, ozone depletion, water and air pollution, and greenhouse gas emissions. EPDs are meticulous, third-party examinations that offer holistic evidence of a product's drive towards sustainability.

How can Sloan products help your project?

To achieve a LEED v4 Materials and Resources credit - EPD for BD+C, a project team must specify 20 different products that have an EPD, each of which are sourced from at least five different manufacturers. For EPD for ID+C, a project team must specify 10 different products sourced from at least three different manufacturers.

Sloan's EPDs are produced in accordance with international standards and verified by an independent third party to ensure the data we communicate is credible, resulting in full LEED Material and Resource credits for your project.

Popular products with EPDs



For a full list of Sloan EPD products
See pages 16-19



ECOS Sensor Flushometer

Water efficiency, hygiene, and reliability combined to deliver long life and dependable performance. Reduces water volume by up to 30%. Available in dual-flush or single-flush high-efficiency options.

For more information on Sloan EPDs, visit sloan.com/EPD

We offset our carbon footprint.

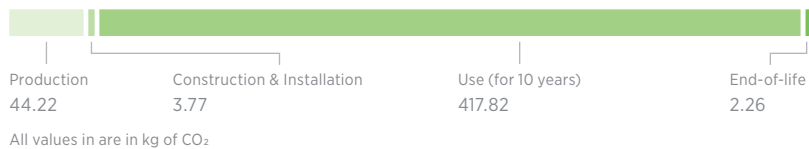
What is a carbon footprint?

Every manufactured product has a carbon footprint—a quantity of carbon generated and released into the atmosphere during its life cycle, the process of sourcing, manufacturing, transporting, and using it. This footprint can be expressed in two ways:

1. **Cradle-to-gate:** This includes every step, from raw material sourcing to manufacturing to installation.
2. **Cradle-to-grave:** The entire life cycle of the product, including maintenance, water use, and ultimate disposal.

Carbon footprint of a Sloan sensor flushometer

468.07 kg of CO₂ are created in the life cycle of a 1.28 gpf sensor flushometer



Sloan combo packages that are Carbon Neutral

- Wall-hung Water Closets **8**
- Floor-mounted Water Closets **8**
- Floor-mounted ADA Water Closets **8**
- Washdown Urinals **17**

For a full list of Sloan Carbon Neutral products See pages 16-19



1.1 gpf Combinations

Sloan has created a broad line up of 1.1 gpf flushometer and fixture combinations to meet the challenges of low-pressure water systems where evacuation performance and drain line carry can be an issue.

High-efficiency water saving

High-efficiency toilet (HET) systems with 1.1 gpf save 31% more water than a 1.6 gpf toilet.

Why are carbon neutral products important?

Concentrations of carbon dioxide and other greenhouse gases in the atmosphere have increased since the beginning of the Industrial Revolution¹ and have caused the Earth's surface temperature to rise.²

At Sloan, we're actively offsetting the embodied carbon in our products and implementing carbon reduction strategies across our enterprise to reduce our carbon footprint.

How do we calculate our carbon footprint?

We utilized data from our EPDs to identify exactly how much carbon is generated when producing our products. Then, leveraging this data, we proudly partnered with Arbor Day to purchase an equal number of reforestation credits in order to offset the carbon we've generated.



2.5 trees for every carbon neutral product

Sloan plants approximately 2.5 trees to offset production for every Sloan carbon neutral product produced.

For more information on Sloan Carbon Neutral products, visit sloan.com/carbon-neutral



How does Sloan offset our embedded carbon footprint?

There are several methods to offset your carbon footprint, but for Sloan, credits through reforestation efforts were the natural decision. All of our current and future forestry carbon credits are listed with the American Carbon Registry, which oversees the registration and verification of our carbon offsets.

Our carbon offsetting process meets the strict guidelines of the British Standards Institute (BSI) PAS 2060 standard. This standard sets the requirements for achieving and demonstrating carbon neutrality.

Sloan recognizes that our responsibility to take care of our planet goes beyond water conservation. Our carbon offset process counteracts carbon damage to the environment, helping us and you reduce our carbon footprint.

“Sloan is working hard to reduce our greenhouse gas emissions, and we’re the only manufacturer in the industry offering carbon neutral products as well.”

Patrick Boyle

Director of Corporate Sustainability

Royal® Reclaimed Flushometer

Incorporating reclaimed water use in dense, urban areas is a key strategy for expanding potable water savings in the built environment. The Royal® Reclaimed Flushometer helps increase water efficiency while minimizing the carbon footprint associated with the energy required to extract, treat, and pump potable water from treatment facilities.

1. IPCC (Intergovernmental Panel on Climate Change). 2013. *Climate change 2013: The physical science basis. Working Group I contribution to the IPCC Fifth Assessment Report*. Cambridge, United Kingdom: Cambridge University Press.

2. U.S. Environmental Protection Agency. *Climate Change Science: Causes of Climate Change*. Retrieved January 14, 2019 from <https://archive.epa.gov/epa/climate-change-science/causes-climate-change.html>

Making products with people in mind

We're taking a holistic view of how our products impact both the environment and the wellness of people who make and use them. That's why, unlike our competitors, we disclose the material composition in many of our high-efficiency products.



We're open about what's inside our products.

What are Health Product Declarations?

A Health Product Declaration (HPD) provides a transparent account of the materials and substances contained within our products, as well as any potential human health effects they might have.

These findings are then compared to a set of safer chemical data lists like GreenScreen that government agencies have established.

Why are HPDs important?

Architects and designers are now looking beyond water and energy performance and are paying more attention to how a building may impact the health of its occupants.

HPDs encourage the specification of products and materials that have disclosed their inventoried chemical ingredients by way of an accepted methodology. HPDs also promote selected products that have been verified to minimize the use and generation of harmful substances.

How can Sloan products help your project?

To achieve LEED v4 Materials and Resources credit—HPD for BD+C, your project team must permanently install at least 20 different products from five different manufacturers who have an HPD in compliance with the Health Product Declaration Open Standard. For HPD for ID+C, your project team must install at least 10 different products from at least three different manufacturers.

HPDs also qualify for other green building rating systems including WELL. With enhanced ingredient disclosures verified by third-party vendors, your project can attain various WELL credits across a variety of criteria.

All of Sloan's Health Product Declarations are listed in the Health Product Declaration Collaborative Public Repository and can help you earn additional LEED credits.

For more information on Sloan HPDs, visit sloan.com/HPD



Striving for more

Sloan is the only plumbing manufacturer offering HPDs.

Sloan Faucets with HPDs

Optima® Faucets
 93

BASYS® Faucets
 45

For a full list of Sloan HPD products
[See pages 16-19](#)



Featured Sloan HPD Faucet: Optima EAF-275

Intelligent electronics and touch-free applications with solar technology. Ideal for applications that require a reliable sensor activated faucet and efficient water savings.

Touch free sustainability

AC powered and other electronic faucets are touch-free and use as little as 0.18 gallons per cycle.

How to get credit for your sustainable project

We've worked diligently to ensure that sustainability and wellness are at the forefront of every product that we create.



Leadership in Energy and Environmental Design (LEED)

LEED is an internationally recognized green building certification system, developed by the U.S. Green Building Council (USGBC), providing third-party verification that a building was designed and built using strategies aimed at improving performance.

Sloan Product Points

- Water Efficiency
- Materials & Resources – EPD and HPD
- Multi-attribute Optimization point



WELL Building Standard® (WELL)

The WELL Building Standard is a performance-based system for measuring, certifying, and monitoring features of the built environment that impact human health and wellbeing through the air, water, nourishment, light, fitness, comfort, and mind.

Sloan Product Credits

- Meet WELL credit criteria for water in W08 Hygiene Support, W09 Onsite Non-potable Water Reuse
- Meet WELL credit criteria for materials in X01 Materials Restrictions and X07 Materials Transparency



Green Globes

The Green Globes system was based on the Building Research Establishment's Environmental Assessment Method (BREEAM) by the Canadian Standards Association. It is owned and operated by the Green Building Initiative and used in the United States and Canada.

Sloan Product Points

- Water and Materials & Resources categories



Building Research Establishment's Environmental Assessment Method (BREEAM)

Launched in 1990 by the Building Research Establishment (BRE), it is a sustainability assessment method that is used to masterplan projects, infrastructure, and buildings, set standards for the environmental performance of buildings through the design, specification, construction, and operation phases, and can be applied to new developments or refurbishment schemes.

Sloan Product Points

- Water and Materials categories

A clean and healthy future

We've been committed to sustainability and wellness since our inception, focusing upon the environmental impact of our products, the safety and health of our users, and the ongoing elevation of our standards.

We look forward to continuing to shape this industry and to working alongside you to help provide sustainable products designed with our future in mind.

Sustainability Highlights



Our manual flushometers are made from 90%+ recycled material and are 100% recyclable.



We've been a U.S. Green Building Council supporting member since 2003.



Royal® Reclaimed Flushometers help buildings reach higher sustainability goals by saving potable water.



Arbor Day Foundation partnership offsets our carbon usage by planting approximately 2.5 trees per carbon neutral product Sloan produces.



Sloan's largest manufacturing operation will be a zero landfill facility by 2022, meaning none of our waste will end up in a landfill.



Sloan's Franklin Park facility has been certified by the Alliance for Water Stewardship (AWS) Standard. The first comprehensive global standard defining the responsible use of water for individual facilities within a single watershed.

To view our full offerings of sustainable products visit sloan.com/sustainability-and-wellness

Sloan offers more sustainable and wellness products per category than any other plumbing manufacturer.

Flushometers	EPD Products	M&R EPD Credits LEED 4.1	GreenGlobes M&R Credits	BREEAM Materials Credits	HPD Products	M&R HPD Credits LEED 4.1
Royal® Manual	30	1.5	1	1	13	1.5
Sloan® Manual	10	1.5	1	1	10	1.5
Regal® Manual	4	1.5	1	1	-	1.5
GEM-2® Manual	11	1.5	1	1	11	1.5
SOLIS® Sensor	7	1.5	1	1	7	1.5
ECOS® Sensor	9	1.5	1	1	9	1.5
G2 Sensor	6	1.5	1	1	6	1.5
Sloan® Sensor	4	1.5	1	1	4	1.5
CX Flushometers	21	1.5	1	1	21	1.5

Water Closet Fixtures

Wall Hung	6	1.5	1	1	6	1.5
Floor Mounted	9	1.5	1	1	9	1.5

Urinal Fixtures

Washdown	14	1.5	1	1	14	1.5
Waterfree	-	-	-	-	-	1.5
Hybrid	-	-	-	-	-	1.5

Lavatory Fixtures

Wall Mounted	5	1.5	1	1	5	1.5
Drop-in	5	1.5	1	1	5	1.5
Undermount	2	1.5	1	1	2	1.5
Wheelchair	3	1.5	1	1	3	1.5

Sustainability product chart continued on next page

Carbon Neutral Products	Water Efficiency Products	LEED v4 & 4.1 O+M Credits	LEED v4 & 4.1 BD+C Credits	LEED v4 & 4.1 ID+C Credits	WELL Products	WELL Codes
4	208	3* or 5**	2* or 6†	4* or 12‡	13	D, F, G, H
-	71	3* or 5**	2* or 6†	4* or 12‡	10	F, G, H
-	4	3* or 5**	2* or 6†	4* or 12‡	-	-
-	13	3* or 5**	2* or 6†	4* or 12‡	11	F, G, H
5	44	3* or 5**	2* or 6†	4* or 12‡	7	B, F, H
7	30	3* or 5**	2* or 6†	4* or 12‡	9	B, F, H
-	28	3* or 5**	2* or 6†	4* or 12‡	6	B, F, H
-	91	3* or 5**	2* or 6†	4* or 12‡	4	B, F, H
-	12	3* or 5**	2* or 6†	4* or 12‡	21	B, F, H
1	-	-	-	-	6	F, G, H
2	-	-	-	-	9	F, G, H
3	-	-	-	-	14	F, G, H
-	-	5	6	12	-	-
-	-	5	6	12	-	-
2	-	-	-	-	5	C, F, G, H
2	-	-	-	-	5	C, F, G, H
1	-	-	-	-	2	C, F, G, H
2	-	-	-	-	3	C, F, G, H

*Sloan Urinals. † Sloan Water Closets. ‡Credits are equivalent to HPD Credits but cannot be combined

**Combo Packages
(Flushometer & Fixture)**

	EPD Products	M&R EPD Credits LEED 4.1	GreenGlobes M&R Credits	BREEAM Materials Credits	HPD Products	M&R HPD Credits LEED 4.1
Wall Hung Water Closet	18	1.5	1	1	18	1.5
Floor Mounted Water Closet	18	1.5	1	1	18	1.5
Floor Mounted ADA Water Closet	18	1.5	1	1	18	1.5
Washdown Urinal	51	1.5	1	1	51	1.5

Faucets

Optima®	184	1.5	1	1	93	1.5
BASYS®	45	1.5	1	1	45	1.5

Shower Heads

Standard	-	-	-	-	-	-
Institutional	-	-	-	-	-	-

Hand Dryers

XLERATOR®	10	-	1	1	10	-
XLERATOReco®	10	-	1	1	10	-

Soap Dispensers

Sloan	-	-	-	-	-	-
Sloan Combo	-	-	-	-	-	-
Optima	-	-	-	-	-	-

The WELL Building standard uses a comprehensive rating system encapsulating 10 concepts consisting of features with distinct health intents. Sloan has a range of products to help you rise to the standard and earn certification for your building.

WELL Code	Water Concept and Feature	Points
A	W08 Handwashing / Part 1 - Provide Bathroom and Handwashing Accommodations	2 points
B	W08 Hygiene Support / Part 2 - Enhanced Bathroom Accommodations	1 point
C	W08 Hygiene Support / Part 3 - Support Effective Handwashing	1 point
D	W09(Beta) Onsite Non-potable Water Reuse / Part 1 - Implement Safety Plan for Non-potable Water Capture and Reuse	2 points

Carbon Neutral Products	Water Efficiency Products	LEED v4 & 4.1 O+M Credits	LEED v4 & 4.1 BD+C Credits	LEED v4 & 4.1 ID+C Credits	WELL Products	WELL Codes
8	17	3	2	4	18	B, D, F, G, H
8	49	5	2	4	18	B, F, G, H
8	25	3	2	4	18	B, F, G, H
17	101	5	6	12	51	B, D, F, G, H
-	69	5	2	4	184	B, C, E, F, H, I
-	-	-	-	-	45	B, C, E, F, H, I
-	6	4	1	2	-	-
-	4	4	1	2	-	-
-	-	-	-	-	10	A, F
-	-	-	-	-	10	A, F
-	-	-	-	-	26	A, B, I
-	-	-	-	-	14	A, B, I
-	-	-	-	-	4	A, B, I

WELL Code **Material Concept and Feature**

Points

E	X01 Fundamental Material Precautions / Part 3 - Restrict Lead	Precondition
F	X07 Material Transparency / Part 1 - Select Products with Disclosed Ingredients	1 point
G	X07 Material Transparency / Part 2 - Select Products with Enhanced Ingredient Disclosures	1 point
H	X07 Material Transparency / Part 3 - Select Products with Third-party Verified Ingredients	1 point
I	X12(Beta) Contact Reduction / Part 2 - Address Surface Hand Touch	1 point

*Sloan Urinals. † Sloan Water Closets. °Credits are equivalent to HPD Credits but cannot be combined



Water Connects Us®


World Headquarters

10500 Seymour Avenue
Franklin Park, IL 60131
U.S.A.

800.982.5839
sloan.com

Follow Sloan

 /sloanvalvecompany

 @sloan_valve

 @sloan_valve

 /sloan_valve

 /sloan-valve-company

©2021 Sloan Valve Company. All Rights Reserved.

