

DESCRIPTION

Designer Series™ 2-Station Wall-Mounted Counter Top Sink.

DETAILS

- Material: Corian/Silestone
- Width: 60" (1,524mm)

FEATURES




Two Station Lavatory System with the following features:

- Dimensions: 60" x 22" x 5"
- A monolithic console available in Corian or quartz
- Undermount bowls available in vitreous china or solid surface
- ADA compliant if Installed properly
- Multiple mounting options
- Basins can be sized to project requirements
- Many customization options - see architectural worksheet for all options
- Easy installation
- Pairs great with Sloan faucets and soap dispensers

COLORS

- For a complete list of Corian® colors:
<http://www.corian.com/colors-of-corian-r->
- For a complete list of Corian® quartz colors:
<http://www.corianquartz.com/colors-of-zodiaq-r->
- For a complete list of Silestone® quartz colors:
<http://www.silestoneusa.com/colors/>

SUGGESTED FAUCETS

	Name	Description
	EBF-650	View more info
	EBF-655	View more info
	EBF-615	View more info

**COMPLIANCES & CERTIFICATIONS**

(cUPC Certified, BAA Compliant, IGC156, ADA Compliant)

RECOMMENDED SPECIFICATION

Sloan Designer Series Sink model no. DSCT 8X000 Countertop Style Sink. Product to be fabricated out of Corian or quartz with vitreous china or solid surface undermount bowls. Sloan automated sensor faucet. Sloan sensor operated foam soap dispenser. Sink design to be ADA compliant and IAPMO certified. Supplied with angle brackets.

DOWNLOADS

- [DSOF/DSG/DSWD/DSCT-80000 Installation Instructions](#)
- [Additional Downloads](#)

NOTES

All information contained within this document subject to change without notice.

Many customization options – see [architectural worksheet](#) for all options

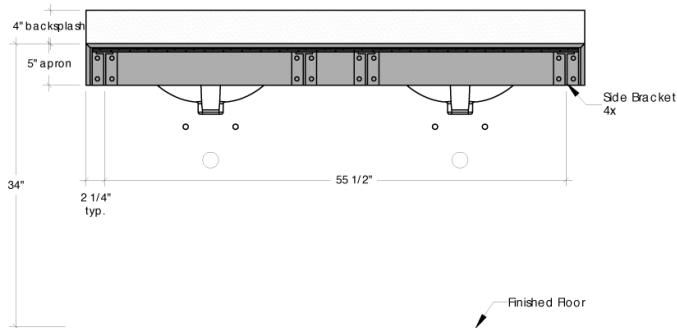
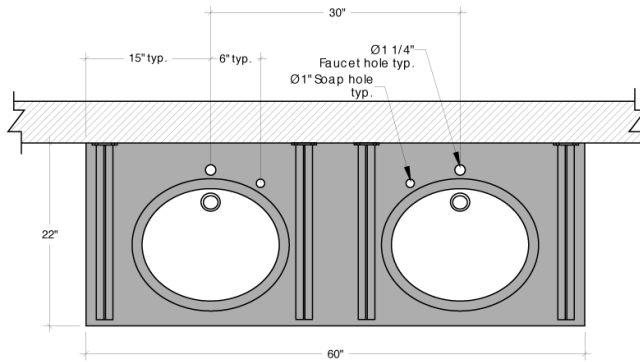
[Find a compatible faucet](#) for this sink.

[Find a matching soap dispenser](#) for this sink.

Sloan 10500 Seymour Ave, Franklin Park, IL 60131

Phone: 800.982.5839 • Fax: 800.447.8329 • sloan.com

ROUGH-IN



Note: Mount brackets to allow clearance for plumbing, optimal spacing between all brackets is 18" +/- 3".

