

BUILDING DESIGN[®]

WHERE
TECHNOLOGY
AND INNOVATION
COLLIDE

NOVEMBER/DECEMBER 2020

+ CONSTRUCTION



75

TOP PRODUCTS 2020



SEC HORIZON



75

TOP PRODUCTS

BD+C readers and editors select their top building products from the past year in our annual 75 Top Products report.

INDEX

AGC GLASS NORTH AMERICA, Lacobel T Warm
 Grey Spandrel back-painted decorative glass..... 22

ALLEGION, Schlage Control smart locks..... 44

ARMSTRONG CEILINGS, ACOUSTIBuilt ceiling... 36

ARRISCRAFT, Midtown Thin Stone 22

ASSA ABLOY, Rockwood hands-free door pulls... 44

ATLAS ROOFING, ACFoam-HD CoverBoard-FR ... 22

AZON USA, MLB dual cavity daylighting systems ... 32

BILCO CO., THE, ACDSV Acoustical Automatic
 Smoke Vent 44

BOBRICK WASHROOM EQUIPMENT, Accessible
 toilet compartment combination units..... 38

BRADLEY CORP., WashBar handwashing station
 L-shaped design..... 38

C.R. LAURENCE, GRS TAPER-LOC glass railing
 system 40

CENTRIA, Versawall H+ insulated metal panel ... 22

CONSTRUCTION SPECIALTIES, DriftReady Stairs ... 40

CRYSTAL WINDOW & DOOR, AC85 Acoustic
 Casement Window..... 44

CUPACLAD, CupaClad 101 Logic natural slate
 exterior cladding..... 22

DORMAKABA, Switch Tech electronic
 access control technology..... 44

DUPONT, Tyvek Roof Protector..... 23

ECORE, Aurora resilient rubber sheet flooring... 36

EOS SURFACES, EOScu biocidal hard surface ... 36

FRESHAIR SMOKING DETECTION, FreshAir
 smoking detection device..... 26

GAF, Timberline HDZ Shingles with LayerLock... 23

GARLAND, Defense Force antimicrobial disinfectant... 36

GE, UltraFresh Front Load Washers 26

GEBERIT, Sigma10 Series flush plates 38

GENERAL SHALE, Watsontown Brick..... 23

GEORGIA-PACIFIC, DensDefy Accessories 23

GKD METAL FABRICS, Bronze Collection
 metal fabric 23

HONEYWELL BUILDING CONTROL, ThermoRebellion
 AI-driven thermal imager 26

INOX, INOX MicroArmor antimicrobial coating ... 36

INPRO, BioPrism solid surface material..... 37

INSULGARD SECURITY PRODUCTS, Stormdefend
 TTH350 door system 45

IRONROCK, Metro Brick thin brick 24

JAMES HARDIE, Aspyre Collection fiber cement... 24

JOHNSON CONTROLS, YORK YZ Magnetic
 Bearing Centrifugal Chiller..... 28

KAWNEER, 1620OUT/1620OUT SSG Curtain
 Wall System..... 32

KINGSPAN LIGHT + AIR, UniQuad
 energy-efficient translucent windows 32

KOHLER CO., Graze smart faucet 38

KONE, Elevator AirPurifier, Handrail Sanitizer..... 28

KOVA MODULAR OFFICE SOLUTIONS,
 Modular private and semi-private offices 37

LAMINATORS INC., Omega-Lite ACM panels..... 24

LATICRETE, SpectralLock Pro Premium
 Translucent Grout 40

LG, LG Air Conditioning Technologies..... 28

LORIN INDUSTRIES, Perforated coil anodized
 aluminum products..... 24

MAD ELEVATOR, Toe-To-Go foot-activated
 elevator call button..... 28

MCNICHOLS COMPANY, McNichols Infill Panels... 24

METL-SPAN, Metl-Span 8-inch cold storage panels.. 24

MODERNFOLD, Pureview glass wall system..... 45

NANAWALL, SL84 folding glass wall system..... 45

NAVIEN, NFB-C fire tube commercial boilers 28

NEW MILLENNIUM, Thin-slab composite
 floor systems 40

OWENS CORNING, Foamular NGX Insulation 40

PANASONIC, Intelli-Balance 100 Energy
 Recovery Ventilator..... 30

PETERSEN ALUMINUM, PAC-CLAD 7.2
 perforated panel..... 24

POLYGLASS, Polyflex G with Fastlap..... 24

ROCKWOOL, Cavityrock Black Insulation Board ... 42

SAFTI FIRST, SuperLite II-XLB 60-120..... 32

SHERWIN-WILLIAMS, Emerald Rain Refresh with
 Self-Cleaning Technology..... 24

SIEMENS BUILDING TECHNOLOGIES, Siveillance
 Thermal Shield..... 30

SIMPSON STRONG-TIE, Yield-Link 42

SLOAN, Touch-free restroom products 38

STO CORP., StoVentec Rainscreen Systems 24

SUNFLARE, PowerFit solar panels..... 30

TAMLYN, TamlynWrap RainScreen..... 26

TARKETT NORTH AMERICA, LinoWall xf2..... 37

TREX COMMERCIAL PRODUCTS, Trex Cladding... 26

TRIM TEX, Fast Edge drywall vinyl corner beads... 37

TYPAR, TYPAR MetroWrap building wrap..... 26

USG, Sheetrock Brand EcoSmart Panels 42

VIEWRAIL, Terrace floating stair system..... 42

VIRACON, Viracon Thermal Spacer (VTS)..... 32

VITRO ARCHITECTURAL GLASS, Solarban 60 ... 34

WHIRLPOOL, Small Spaces Suite appliances ... 30

WILSONART, High Pressure Laminate..... 37

YKK AP, YWW 50 TU Window Wall 34

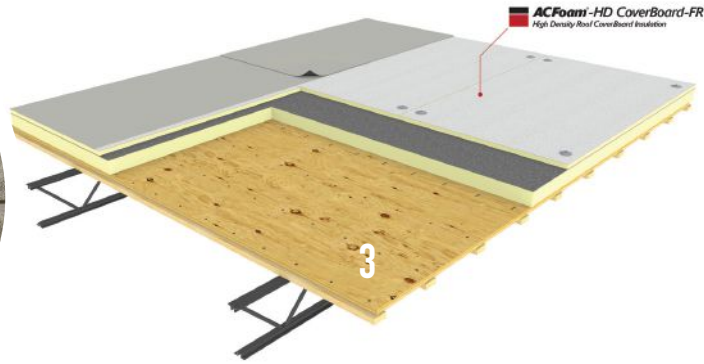
ZIPWALL, Steel Frame Magnetic Door Kit 3070 ... 42



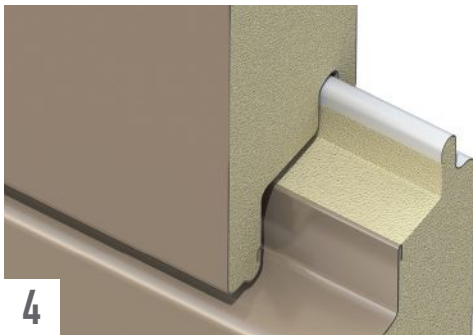
1



2



3



4



5

1. \ LACOBEL T WARM GREY SPANDREL BACK-PAINTED DECORATIVE GLASS

The Lacobel T Warm Grey Spandrel, the latest in AGC's portfolio of back-painted decorative glass, provides architects and designers with a fully opaque, neutral-colored spandrel that complements the aesthetics of most low-e coatings used today. Lacobel T Warm Grey Spandrel withstands thermal shock, resists both impact and scratches, and will never fade, as its temperable paint is fused into the glass. The glass is pre-painted, so fabricators can easily cut and temper the product, enabling them to more easily manage production and inventory. The product is Cradle to Cradle Certified Silver.

AGC GLASS NORTH AMERICA | CIRCLE NO. 800

2. \ MIDTOWN THIN STONE

The Midtown thin-clad brick collection provides a modern aesthetic similar to linear brick, with two slim face rises, in long lengths. The units can be installed with or without mortar depending on the desired look. The stone can also be laid separately (one size,

continuously) or the two sizes can be combined. The maker's Natural Process technology uses only natural materials (plus color pigments) to create stone products with the natural aesthetics and durability of quarried stone.

ARRISCRAFT | CIRCLE NO. 801

3. \ ACFOAM-HD COVERBOARD-FR

Atlas Roofing's latest polyiso roof insulation, ACFoam-HD CoverBoard-FR, is a lightweight cover board option that can help achieve a UL Class A fire-rated roof assembly when used over combustible wood roof decks. It can achieve UL Class A fire ratings using only one layer, saving labor and materials. The insulation is comprised of Atlas' ACFoam closed-cell polyisocyanurate (polyiso) foam core integrally bonded to inorganic ACFoam-III coated glass facers.

ATLAS ROOFING | CIRCLE NO. 802

4. \ VERSAWALL H+ INSULATED METAL PANEL

The latest expansion to Centria's Versawall product line, the Versawall

H+ insulated metal panel is comprised of a galvanized steel face and foam insulation, making it strong but lightweight. Available in modules of 30 and 36 inches and in two- and three-inch thicknesses, the panels can be manufactured in a wide variety of finishes and colors. The panels are ideal for large-scale buildings that have lower, wider profiles, such as warehouses, schools, and shopping centers.

CENTRIA | CIRCLE NO. 803

5. \ CUPACLAD 101 LOGIC

Cupa Group's CupaClad 101 Logic is a comprehensive, easy-to-install rain-screen system, complete with concealed attachments, which results in natural slate being the main aesthetic of the building's exterior façade. By offering optimal visual balance, CupaClad 101 Logic portrays natural slate's texture and sheen, while also complementing each project's other building materials. CupaClad 101 Logic is durable, easy to maintain, and has proven lifecycle savings.

CUPA GROUP | CIRCLE NO. 804



6



7



8



9



10

6. \ TYVEK ROOF PROTECTOR EDITORS PICK

This synthetic roofing underlayment protects roof decks from wind and water with a lightweight, durable weather barrier. Its slip-resistant surface makes it suitable for steep slope roofing applications, under asphalt shingles or metal cladding. The barrier features a high strength to weight ratio and tear-resistant material, which eases installation and improves performance. Rolls provide 1,000 sf of coverage.

DUPONT BUILDING ENVELOPE | CIRCLE NO. 805

7. \ TIMBERLINE HDZ SHINGLES EDITORS PICK

Timberline HDZ Shingles offer the industry's first wind warranty for roofing shingles with no maximum wind speed limit. To meet the requirements for the warranty, roofing contractors must install the shingles with four qualifying GAF accessories, as well as the company's LayerLock technology. LayerLock mechanically fuses the common bond between overlapping shingle layers for added strength. To speed installation, GAF designed an oversized nailing area.

GAF | CIRCLE NO. 806

8. \ WATSONTOWN BRICK

Watsonstown Brick manufactures full lineups of face brick, lightweight face brick, brick pavers, and vehicular paving brick in a variety of textures, colors, and styles—from matt to tumbled to knife cut. Mudbox, one of Watsonstown's oldest textures, is made with fine clays that are first given a slurry coating, and then coated with sand for a rustic look. Mudbox Watex adds texture to Mudbox for an irregular appearance.

GENERAL SHALE | CIRCLE NO. 807

9. \ DENSDEFY ACCESSORIES

Georgia-Pacific has expanded its DensElement Barrier System with the launch of DensDefy Accessories, which includes liquid flashing and a transition membrane. DensDefy Liquid Flashing seals and protects against water intrusion for transitions between substrates and unwanted air movement in new or existing wall assemblies as part of the DensElement Barrier System. The fast-cure product eliminates the need for joint reinforcing tape, reducing overall

preparation time. DensDefy Transition Membrane is a flexible, self-adhering membrane used to maintain continuity of the above-grade, water-resistant barrier and air barrier at complicated transition areas of the DensElement Barrier System. It is ideal for gaps greater than one inch, resulting from transitions between dissimilar materials, vertical expansion joints, or at the base of a rough opening.

GEORGIA-PACIFIC | CIRCLE NO. 808

10. \ BRONZE COLLECTION METAL FABRIC

GKD Metal Fabrics has unveiled new patterns and expanded enhanced collections of metal mesh products. Its Bronze Collection now offers a complete portfolio of rigid/PC metal fabric. Its Helix and Ellipse weaves now are available in cost-effective aluminum materials. The pattern of a new rigid metal fabric called Choptank (pictured) has smaller open areas. Ripple and Tigris—previously custom weaves—are now part of GKD's standard product offering.

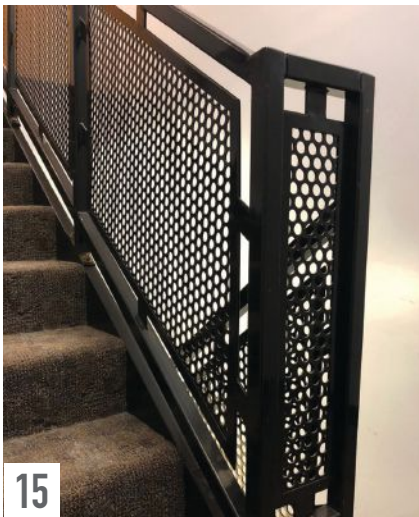
GKD METAL FABRICS | CIRCLE NO. 809



11



13



15

11. \ METRO BRICK

This kiln-fired thin brick is manufactured following stringent guidelines for use in all types of brick veneer applications and construction types, from schools to hospitals to hotels. Thin brick like MetroBrick uses 70% less resources to manufacture than full bed brick, says the maker. The product



12



14

line is available in a variety of sizes, colors, textures, and blends, and can be customized to match existing buildings.

IRONROCK | CIRCLE NO. 810

12. \ ASPYRE COLLECTION

James Hardie's Aspyre Collection pairs the thick, distinctive profiles of the company's Artisan siding with the smooth, geometric of its Reveal Panel System. The result is a collection that allows architects and builders to create a range of design styles, from traditional to ultra-modern. The $\frac{5}{8}$ -inch-thick Artisan siding profiles cast deep shadow lines to create strong horizontal and vertical definition. Reveal panels can be installed horizontally or vertically, and can be cut to size on-site. Two trim profiles:

Reveal Recess accentuates deep channels, while Surround trim adds dimension and emphasizes height.

JAMES HARDIE | CIRCLE NO. 811

13. \ OMEGA-LITE ACM PANELS

Architecture firm Vocon specified Omega-Lite ACM panels to clad The Quarter, a 194-unit luxury apartment complex in Cleveland's Ohio City neighborhood. RC Glass installed 27,000 sf of the product on the five-story mixed-use development using Laminators proprietary 1-Piece, Tight-Fit system. The panels give The Quartet a Class A fire rating and meet NFPA 285, Miami-Dade Product Control, and Florida Product Approval requirements.

LAMINATORS | CIRCLE NO. 812

14. \ PERFORATED COIL ANODIZED ALUMINUM PRODUCTS

Lorin Industries has updated its coil anodized aluminum for perforated aluminum products to include new hole patterns, including a square pattern. The cost-effective coil anodizing process protects the aluminum while also improving its aesthetic properties and durability. Perforated anodized aluminum is gaining popularity in various architectural and construction applications for its benefits, like screening sunlight, particulates, noise, and rain. Lorin perforated anodized aluminum can be installed with standard electric hand tools. Once sized for installation, most panels are lightweight enough to install without a crane.

LORIN INDUSTRIES | CIRCLE NO. 813

15. \ MCNICHOLS INFILL PANELS

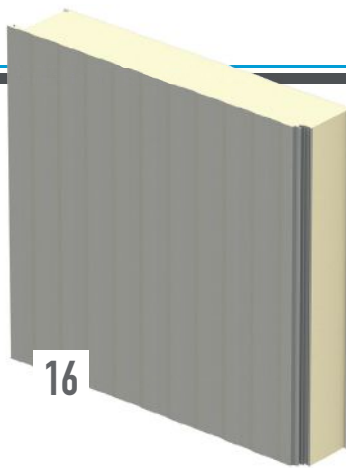
Engineered for balconies, façades, partitions, railings, and signage, Infill Panels from McNichols offer a range of perforated metal, expanded metal, and wire mesh options. The durable, low-maintenance panels are cut to exact specifications and frame pieces by welding angle, flat bar, and U-edging along the perimeter to create a precise, sturdy structure.

MCNICHOLS | CIRCLE NO. 814

16. \ 8-INCH COLD STORAGE PANELS

Metl-Span expanded its line of cold storage panels with an 8-inch product. Two inches thicker than the thickest profile in the company's current line of cold storage panels, the 8-inch panel provides among the highest insulating values on the market, according to the maker. The panel functions as walls and ceilings in new and retrofit construction.

METL-SPAN | CIRCLE NO. 815



17. \ PAC-CLAD 7.2 PERFORATED

Two entry canopies at the Eloy (Ariz.) City Hall create a distinctive shading element and added texture to the facility. SmithGroup specified PAC-CLAD 7.2 perforated panels with an Aged Copper Finish for the canopies to blend with the building's EIFS exterior walls. The west canopy extends into the interior spaces to create a signature ceiling element. "It really brings that texture and layering into the building," said SmithGroup designer Stacia Ledesma.

Photo: alanblakely.com

PETERSEN ALUMINUM | CIRCLE NO. 816



18. \ POLYFLEX G APP EDITOR'S PICK GRANULATED CAP SHEET

Polyglass' latest modified bitumen roofing membrane, the Polyflex G APP granulated cap sheet for heat-welded applications, features the company's patented FASTLap technology for speedier installation and potential labor savings. FASTLap is a granule-free end lap that allows for a more reliable seal at roll-end, says the maker. With zero granules to remove at end laps during install, Polyflex G APP adheres quicker and the result is a stronger, watertight roof system.

POLYGLASS U.S.A. | CIRCLE NO. 817



19. \ EMERALD RAIN REFRESH

Sherwin-Williams successfully leveraged the Self-Cleaning Technology developed in Loxon Self-Cleaning Acrylic Coating and applied it to the latest addition to the Emerald product line: Emerald Rain Refresh. The coating

sheds dirt upon contact with rain or water, simplifying upkeep. The self-priming application helps to save time during the painting process, and UV- and weather-resistant qualities reduce common exterior coating issues such as blistering and peeling. The product is suitable for most exterior surfaces, including wood, masonry, and concrete.

SHERWIN-WILLIAMS | CIRCLE NO. 818

20. \ STOVENTEC RAINSCREEN EDITOR'S PICK

This ventilated rainscreen cladding system is comprised of glass-faced

composite panels, thermal insulation, and robust sub-construction that includes steel and aluminum brackets, mineral wool thermal insulation board, render carrier board, reinforcement plaster, reinforcement mesh, and Sto textured finish. The result is a system that combines the qualities of an engineered façade system and a sleek modern design aesthetic. StoVentec Rainscreen Cladding panels are manufactured in a variety of shapes, with extensive color options.

STO CORP. | CIRCLE NO. 819



21



22



23

21. \ TAMLYNWRAP

This three-in-one water resistant barrier enhances the drainage efficiency and drying proficiency of wall assemblies. TamlynWrap is available with two air cavity gap sizes: the TamlynWrap Rain Screen 6.3 provides a 6.3mm air cavity in between the cladding and the sheathing material; TamlynWrap Rain Screen 10.1 creates a 10.1mm gap. The barriers' thick filament is incompressible, so it can act as furring strip and reduce the installation cost and liability.

TAMLYN | CIRCLE NO. 820

22. \ METROWRAP

Designed for use on multifamily

dwelling, light commercial projects, and large commercial structures, this breathable building wrap offers superior UV protection—it can be exposed for up to 12 months with no UV degradation—and tear strength up to five-times greater than other wraps on the market, says the maker. Typar MetroWrap will not support mold growth, and it can stand up to harsh chemicals and jobsite cleaning techniques.

TYPAR | CIRCLE NO. 821

23. \ TREX CLADDING

This product line adapts the proven performance and aesthetic features of Trex's composite deck boards for exterior rainscreen or open-joint façade systems. Mix and match colors and styles from the Trex Transcend square-edge deck board line to create the look of exotic wood siding. The cladding can be orientated horizontally or vertically. The board's shell is impact-, scratch-, and fade-resistant. The core is made using 95% recycled materials. Available in three lengths: 12, 16, and 20 feet.

TREX | CIRCLE NO. 822



24

24. \ FRESHAIR

FreshAir Smoking Detection's patented PolySens technology can monitor for, immediately detect, and prove tobacco and marijuana smoking in smoke-free apartment buildings, public housing complexes, and other high-volume residential settings. FreshAir's

detection devices plug into standard Type B outlets and are secured with tamper-proof screws. Each device can monitor up to 500 sf of space.

FRESHAIR SMOKING DETECTION | CIRCLE NO. 823

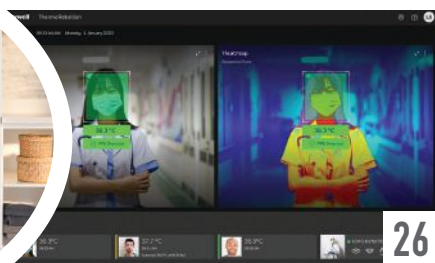
25. \ ULTRAFRESH WASHERS

UltraFresh Front Load Washers use first-of-its-kind technology to help prevent the growth of odor-causing bacteria. After the wash cycle, the system's Odorblock unit pulls in fresh air, removing moisture from the door, gasket, and basket. The washers are also protected by a unique antimicrobial technology developed exclusively for GE by Microban.

GE | CIRCLE NO. 824



25



26

26. \ THERMOREBELLION AI-DRIVEN THERMAL IMAGER

This AI-driven thermal imager detects elevated body temperature for non-invasive, preliminary screening of personnel entering a facility. The ThermoRebellion temperature monitoring solution can be rapidly deployed at the entryway of commercial buildings to efficiently identify whether personnel exhibit an elevated facial temperature. As individuals pass in front of a high-resolution, thermal imaging camera, their skin temperature is automatically detected within two seconds and displayed on an accompanying monitor. The system can also identify if individuals are wearing the required personal protective equipment needed for entering the building.

HONEYWELL | CIRCLE NO. 825

27. \ YORK YZ MAGNETIC BEARING CENTRIFUGAL CHILLER EDITORS' PICK

The YORK YZ Magnetic Bearing Centrifugal Chiller from Johnson Controls is the first chiller optimized for performance with the R-1233zd(E) refrigerant, a low-global warming potential (GWP) refrigerant. The chiller features a variable-speed drive centrifugal compressor and a magnetic-bearing driveline to deliver high machine efficiency and a low total cost of ownership, says the maker. Magnetic bearing technology uses fewer moving parts and eliminates lubrication needs.

JOHNSON CONTROLS | CIRCLE NO. 826

28. \ ELEVATOR AIRPURIFIER, HANDRAIL SANITIZER EDITORS' PICK

In response to the COVID-19 pandemic, KONE has released several indoor air quality (IAQ) and infection control enhancement options for its elevators. The KONE Air Sanitizing System combines HEPA filtration technology with ultraviolet-C germicidal light frequency to improve the IAQ within elevator cabs. The KONE Handrail Sterilizer kills bacteria and viruses using ultraviolet-C LED technology, while NanoSeptic self-cleaning surface products minimize infection risks with high-touch areas such as elevator buttons, touchscreen surfaces, and elevator car handrails.

KONE | CIRCLE NO. 827

29. \ LG AIR CONDITIONING TECHNOLOGIES

LG offers a range of compact and lightweight air conditioning technologies that reduce space and structural requirements while meeting performance and energy efficiency requirements. Unlike traditional systems that require soffits for ductwork and large mechanical rooms for equipment, LG systems are minimally invasive to the building's envelope. The systems can help contribute up to 16 points toward LEED certification.

LG | CIRCLE NO. 828

30. \ TOE-TO-GO EDITORS' PICK

The Toe-To-Go (T2G) foot-activated call button allows for the activation of hall and car station buttons by, you guessed it, foot. The large, durable buttons sit just inches off the ground making it easy for anyone to activate with a gentle kick. The T2G system allows for easy retrofitting of existing installations and is wired in parallel to existing buttons. Available in stainless steel or PVD brass finishes with LED illumination in red, green, blue, white, or amber, the T2G has a surface-mount option for hall stations and a keypad option for the car operating panel (COP), which allows for the entire elevator ride to be a hands-free experience.

MAD ELEVATOR | CIRCLE NO. 829

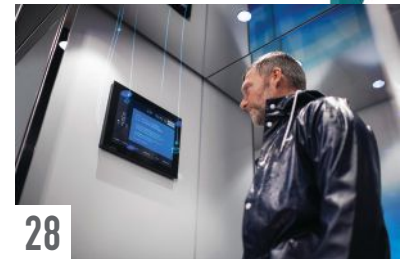
31. \ NFB-C FIRE TUBE COMMERCIAL BOILERS

Navien's NFB-C commercial condensing fire tube boilers feature 97.5% thermal efficiency—among the highest in the industry, according to the maker—and a stainless steel heat exchanger that is form-pressed and robotic laser-welded to minimize the number of weak points that could be prone to thermal stress and corrosion. To ease installation, the units offer top and bottom piping connections. A seven-inch color touch screen display simplifies navigation for setup, troubleshooting, and operation.

NAVIEN | CIRCLE NO. 830



27



28



29



31



30

Surface-Mount

Flush-Mount



32



33



34



35

32. \ INTELLI-BALANCE ENERGY RECOVERY VENTILATOR 100 CFM

Engineered for multifamily and single-family applications, the Intelli-Balance 100 energy recovery ventilator (ERV) offers customizable airflow options (50 to 100 CFM) to create balanced, positive, or negative pressure within dwellings. The ERV can help designers and builders meet ASHRAE 62.2 requirements for continuous whole-building ventilation. Intelli-Balance 100 is a cost-effective, energy-efficient solution for cold climate zones, says the maker. The system comes with a MERV 8 filter; MERV 13 replacements are available.

PANASONIC | CIRCLE NO. 831

33. \ SIVEILLANCE THERMAL SHIELD

The Siveillance Thermal Shield from Siemens quickly measures the body temperature of a person seeking to access a building and enables the results to be integrated into the video

and access systems of corporations. Thermal imaging cameras are used to measure, in a contactless way, the body temperature at a distance of up to two meters, ensuring the safety of monitoring staff. If the camera screening indicates an elevated body temperature, a second reading must be taken using a medical thermometer to confirm the finding. To ensure the highest level of accuracy, the cameras measure the body temperature near the eyes. A positive result triggers acoustic and visual alarms. The temperature is measured for each person individually to ensure accurate and reliable results. If a person shows an elevated body temperature and this finding is confirmed by a second reading obtained with a medical thermometer, the follow-up steps defined in the workflows are initiated automatically.

SIEMENS BUILDING TECHNOLOGIES

CIRCLE NO. 832

34. \ POWERFIT SOLAR PANELS EDITOR'S PICK

These thin, lightweight, flexible solar panels are designed to fit in between the seams of a metal standing seam roof to create a sleek, unobtrusive solar roof system. The panels' butyl-based adhesive backing reduces installation time by up to 50%, says the maker: just peel and stick. Sunflare solar modules have bypass diodes for each individual cell. This means when a cell is shaded, only that individual cell stops producing power.

SUNFLARE SOLAR | CIRCLE NO. 833

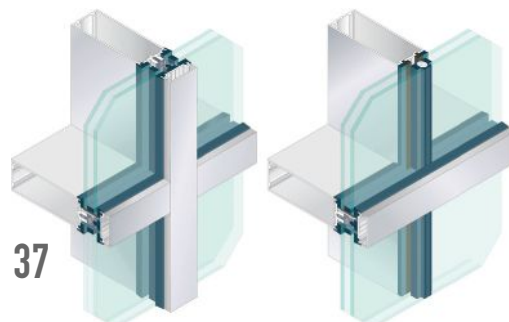
35. \ SMALL SPACES SUITE

Whirlpool's Small Spaces Suite gives multifamily developers, builders, and designers all the appliances that tenants would expect in a full-service kitchen—refrigerator, freezer, cooktop, dishwasher, microwave, and wall oven, all with full-size features but in a smaller package.

WHIRLPOOL | CIRCLE NO. 834



36



37

1620UT Curtain Wall

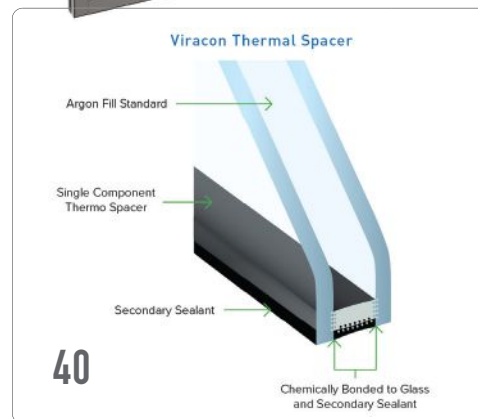
1620UT SSG Curtain Wall



38



39



40

36. \ MLB DUAL CAVITY DAYLIGHTING SYSTEMS

Azon's mechanical lock profile (MLP) dual cavity daylighting systems are designed for use in the most demanding climates and conditions. The dual cavity is debridged to eliminate the metal-to-metal contact. The result is a structural composite of aluminum and polymer that creates a strong thermal barrier for aluminum extrusions. The high-strength system allows for larger spans for aluminum storefronts, curtain walls, and windows.

AZON USA | CIRCLE NO. 835

37. \ 1620UT/1620UT SSG CURTAIN WALL SYSTEM

This curtain wall system features a narrow, two-inch sightline, concealed fasteners, and a two-sided vertical SSG mullion option that combine to create a clean assembly with uninterrupted sightlines. Designed for low- to mid-rise applications in climates where high thermal performing façades are required, the 1620UT/1620UT SSG Curtain Wall System comes with an engineered polymer thermal separator

and accommodates one-inch insulating glass units. Available in a range of finishes and colors.

KAWNEER | CIRCLE NO. 836

38. \ UNIQUAD ENERGY-EFFICIENT TRANSLUCENT WINDOWS

Kingspan Light + Air offers UniQuad energy-efficient, translucent windows for smaller envelope openings. The size of the company's two-panel UniQuad system was scaled to create the more modular and versatile UniQuad Translucent Windows. The system gives architects the same durability, integration, and clean look as the original system, just in a smaller size. UniQuad provides 25% greater light transmission than other daylighting products on the market, according to the maker. Available in heights up to six feet.

KINGSPAN LIGHT + AIR | CIRCLE NO. 837

39. \ SUPERLITE II-XLB 60-120 BUTT-GLAZED WALLS IN GPX ARCHITECTURAL SERIES FRAMING

To maximize views and daylight at the Target Store Lower East Side, in New York, architect Sargenti Architects and

glazier Action Storefronts specified SuperLite II-XLB 60-120 Butt-Glazed Walls in GPX Architectural Series Framing. The system features the industry's largest tested and approved clear view area of 7,980 square inches of any fire resistive glazing product up to two hours. It allowed the design team to create large, uninterrupted storefront windows to showcase Target merchandise, while meeting stringent codes for fire resistive storefront assemblies.

SAFTI FIRST | CIRCLE NO. 838

40. \ VIRACON THERMAL SPACER

This proprietary warm-edge spacer for insulating glass units consists of a black thermoplastic elastomer with integrated desiccant and a primary sealant that is chemically bonded directly to the glass and secondary sealant. The result, says Viracon, is thermal performance that is 14% better than aluminum spacers, and offers 35% better argon retention and increased stability in extreme hot or cold temperatures. The Viracon Thermal Spacer (VTS) is backed by a 12 year warranty.

VIRACON | CIRCLE NO. 839

41



41. \ SOLARBAN 60 LOW-E GLASS AT KINECTS TOWER

Bumgardner Architects specified Vitro Architectural Glass's Solarban 60 low-emissivity glass for the 41-story Kinects Tower, Seattle. The glass was coated with High Performance Coating's Starbright Silver Opaci-Coat-300.

With a solar heat gain coefficient of 0.39, the glass blocks 66% of total solar energy while allowing 70% of visible light to pass through. Vitrium Glass Group was the glass fabricator; Starline Windows, the glazing contractor.

VITRO ARCHITECTURAL GLASS | CIRCLE NO. 840

42



42. \ YWW 50 TU THERMALLY BROKEN WINDOW WALL

The YWW 50 TU is a five-inch-deep window wall glazing system designed for use in multi-story applications. It includes a slab edge cover that yields the beauty and appearance of a curtain wall application. The glass plane is set to the front to maximize thermal performance. The system has mullion options that allow glazing from the interior or the exterior. Thermal performance is enhanced by YKK AP's patented ThermaBond Plus thermal break technology that also provides the system with dual finish capability. ThermaBond Plus is a pour and debridged process that improves the adhesion of the polyurethane material to the aluminum extrusion, optimizing the thermal break.

YKK AP | CIRCLE NO. 841

Azon Saves Energy



Daylighting systems produced with Azon structural thermal barrier technologies —the **MLP™** or **Dual Cavity**— for aluminum windows and high performance glazing components for insulating glass, will yield a fenestration system capable of upholding the highest efficiency and sustainability standards.

- Polyurethane polymer with superior insulating properties for the best balance of energy efficiency and performance
- NEW: **MLP™** (mechanical lock profile) and dual cavity designs for fenestration products used in the most demanding climates and conditions
- High strength for larger spans—industry's strongest thermal barrier for aluminum storefront, curtain wall and windows
- **AZO/Tec®** technical services with expertise in window design



1-800-788-5942 | www.azonintl.com

CIRCLE 767



1 HSW Learning Unit



43



44



45



46



47

43. \ ACOUSTIBUILT SEAMLESS CEILINGS

This ceiling system looks like drywall and performs like an acoustical ceiling, allowing designers to achieve a monolithic look while meeting stringent acoustic requirements. Finished ACOUSTIBuilt panels offer a smooth, non-directional, seamless visual. The installed system achieves a noise reduction coefficient (NRC) of up to 0.70 and a ceiling attenuation class (CAC) up to 48. The panels can be installed with most drywall-compatible light fixtures or diffusers.

ARMSTRONG CEILING SOLUTIONS | CIRCLE NO. 842

44. \ AURORA RESILIENT FLOORING

Aurora is a resilient rubber sheet that features a polyurethane-coated (PUR-coated), calendared-rubber wear layer that is fusion-bonded to an Ecore vulcanized composition rubber (VCR) backing. The result is flooring that provides enhanced ergonomics, comfort, and safety. The surface is hygienic due to a heat-welded installation process.

ECORE | CIRCLE NO. 843

45. \ EOSCU BIOCIDAL HARD SURFACE

EOScu from EOS Surfaces is the industry's only synthetic hard surface that is EPA-registered for public-health claims, continuously killing harmful bacteria within two hours of exposure. The preventive biocidal surface is infused with the company's proprietary copper-oxide compound, which eliminates bacteria through ions that damage bacterial cells. When bacteria and copper ions come into contact, the copper ions weaken the outer membrane of the bacteria cell through the process of oxidation. Copper is toxic to the inside of the cell and, eventually, the copper ions cause the cell to rupture. The cell then loses its vital structure, and dies. EOScu applications include work surfaces, countertops, backslashes, wash bowls, and other solid surfaces.

EOS SURFACES | CIRCLE NO. 844

46. \ DEFENSE FORCE



The Garland Company has launched Defense Force, a product line designed to either clean, disinfect, or protect

commercial facilities. The flagship product is D7, a safe and effective EPA-registered antimicrobial disinfectant that kills bacteria, fungi, germs, and viruses in minutes. D7 has demonstrated effectiveness against viruses similar to COVID-19. D7 can be easily mixed and applied to hard, non-porous surfaces with standard sprayers.

THE GARLAND COMPANY | CIRCLE NO. 845

47. \ INOX MICROARMOR

INOX offers an antimicrobial coating option for its line of stainless steel products, including door levers and pulls, deadbolts, panic devices, and push/pull plates. INOX MicroArmor Antimicrobial Coating is a powder coating infused with antimicrobial technology that is applied during the hardware's manufacturing process and works to inhibit the growth and reproduction of harmful bacteria, mold, and mildew by up to 99.9%. It contains silver ions that attach themselves to a microbe's cellular enzyme to inhibit the growth of the microbe.

INOX | CIRCLE NO. 846



48



49



50



51



52

48. \ MODULAR PRIVATE AND SEMI-PRIVATE OFFICES

As corporate businesses return to work, some companies are rethinking the 100% open-plan layout. KOVA Modular Office Solutions offers a range of configurations for creating private and semi-private office spaces. The modular system includes joining parts and stackable panels that easily fit together to create office fronts, conference rooms, separation walls, and soundproof privacy pods. Extra unused panels can be removed and stored away for when needed.

KOVA MODULAR OFFICE SOLUTIONS

CIRCLE NO. 847

49. \ BIOPRISM SOLID SURFACE MATERIAL

BioPrism solid surface material from InPro inhibits the growth of mold and mildew so facilities can maintain the highest standards in hygiene. Ideal for use as surfaces in shower areas, restrooms, operating rooms,

and other sterile environments that get dirty quickly. The non-porous, sterile material can be used as wall protection in areas such as operating rooms, as well as material for toilet and shower partitions, trim, shower bases, and shower accessories such as soap dishes.

INPRO | CIRCLE NO. 848

50. \ LINOWALL XF2 LINOLEUM FOR WALL APPLICATIONS

Tarkett's LinoWall xf2 line of linoleum for wall applications is naturally bactericidal, and is Cradle-to-Cradle Silver certified. The phthalate-free material is available in six colors, a mix of pastels and neutral shades to provide a direct match between wall and floor. LinoWall xf2 offers surface protection for resistance and easy maintenance.

TARKETT NORTH AMERICA | CIRCLE NO. 849

51. \ FAST EDGE AND FAST EDGE PAPER DRYWALL VINYL CORNER BEADS

This line of paper and paper-free cor-

nerbeads features a sharp nose with no mud bump, and tapered legs to reduce mud usage and speed overall installation time. The nose also acts as a hinge to accommodate framing variances. Its patented mud locks keep the corner held firmly in place without the need of staples or adhesives.

TRIM TEX | CIRCLE NO. 850

52. \ HIGH PRESSURE LAMINATE (HPL) ENGINEERED SURFACE

Wilsonart's High Pressure Laminate (HPL) is a durable engineered surface suitable for a range of vertical and horizontal applications, including countertops, cabinets, fixtures, shelves, architectural doors, and walls. The material is comprised of a wear-resistant overlay, decorative sheet, and impact-resistant kraft, offering lasting visual and functional durability. HPL offers an economical choice with low minimum order quantities and short lead times.

WILSONART | CIRCLE NO. 851



53



54



55



56



57

53. \ ACCESSIBLE TOILET COMPARTMENT COMBINATION UNITS

Bobrick Washroom Equipment offers four new accessible toilet compartment combination units developed to achieve unambiguous compliance with multiple critical building codes. Bobrick's B-3091, B-3092, B-30919, and B-30929 units combine toilet tissue dispensers, toilet seat cover dispensers, and waste disposals in a single stainless steel unit. The units are oriented horizontally to enable maximum compliance with the 2010 Americans with Disabilities Act and 2009 and 2017 ICC A117.1 standards and the California Building Code.

BOBRICK WASHROOM EQUIPMENT | CIRCLE NO. 852

54. \ WASHBAR HANDWASHING STATION L-SHAPED DESIGN

Bradley Corp.'s next-generation WashBar clean/rinse/dry handwashing station features a thin, L-shaped design that gives the feel that the all-in-one fixture is floating above the sink. With only one connection point to the sink, the design provides more

open space for easier cleaning. The durable chrome-plated cast alloy fixture features LED lighting to visually orient the user through the hand washing process with easy-to-identify icons on top of the bar. The bowl is designed to avoid splashing.

BRADLEY CORP. | CIRCLE NO. 853

55. \ SIGMA10 SERIES FLUSH PLATES

Sigma10 Series flush plates from Geberit feature sensor technology that allows users to wave their hand to provide touch-free toilet flushing. Offering dual-flushing capabilities, the sensor technology provides optimum water savings, says the maker. Sigma10 is compatible with standard 1.6/0.8 gpf in-wall toilet systems and the low-consumption 1.28/0.8 systems. Users may simply walk away for a full flush. The touch-free Sigma10 is available with either battery or AC power and comes in seven finishes.

GEBERIT | CIRCLE NO. 854

56. \ GRAZE SMART FAUCET

The Graze smart faucet from Kohler

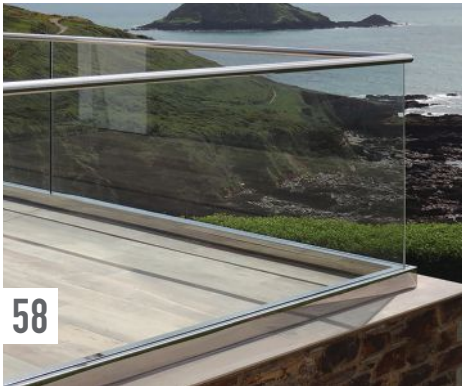
features voice-activated technology that dispenses measured amounts of water at the user's spoken command, from "turn the water on" to "dispense one gallon." It can fill containers to a preset level or dispense a specific quantity. The touchless faucet includes a motion sensor that turns water on and off with the wave of a hand.

KOHLER | CIRCLE NO. 855

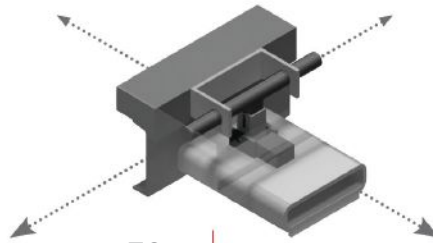
57. \ TOUCH-FREE RESTROOM PRODUCTS FOR TEMPORARY FIELD HOSPITALS

Sloan provided its touch-free restroom products to support the conversion of Chicago's McCormick Place Convention Center (pictured) and Yale University's Payne Whitney Gym into temporary field hospitals, or COVID-19 Care Centers. With 500 beds in makeshift rooms, plumbing requirements at McCormick Place called for more than 200 Sloan sensor faucets in handwashing stations. At Yale, the project team installed Sloan sensor-operated faucets and flushometers to provide a touch-free experience.

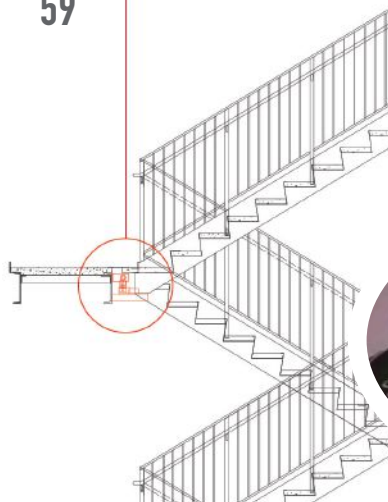
SLOAN | CIRCLE NO. 856



58



59



61



60



62

58. \ GRS TAPER-LOC GLASS RAILING SYSTEM EDITORS' PICK

Designed for 1/2- to 3/4-inch monolithic tempered glass, the GRS TAPER-LOC glass railing system is the first and only ICC-approved base shoe system on the market, says the maker. The dry glaze system self-centers and plumbs the glass, all from the floor side of the railing, reducing installation time by up to 50%. Glass panels can be removed, adjusted, or replaced with ease. Designed for interior and exterior applications. Available in eight finishes.

C.R. LAURENCE | CIRCLE NO. 857

59. \ DRIFTREADY STAIRS

Designed with patent-pending connectors that keep stairs stable at rest, yet flexible when a building moves, DriftReady Stairs accommodate seismic movement and interstory drift during seismic events. Full-scale shake table testing by the University of Nevada, Reno, showed that the stair system surpassed industry-standard interstory drift levels of 2.5%, reaching drift levels of up to 4.0%. The stairs also reduce

the transfer of damaging force back into a structure during building movement.

CONSTRUCTION SPECIALTIES | CIRCLE NO. 858

60. \ SPECTRALOCK PRO PREMIUM TRANSLUCENT GROUT EDITORS' PICK

This patented, stain-proof, high-performance epoxy grout offers a unique opaque color that diffuses light and adds vibrancy to designs. Spectralock Pro Premium Translucent Grout is crack-resistant, durable, and cleanable to the original color. It features a non-sag formula for grout joints from 1/16 to 1/2 inch, and offers 80 minutes working time at 70 F. Suitable for installations at wide temperature ranges.

LATICRETE | CIRCLE NO. 859

61. \ THIN-SLAB COMPOSITE FLOOR SYSTEMS

New Millennium offers three proven solutions for optimizing multi-story, multifamily construction projects with thin-slab, long-span composite floor systems. The three approaches—composite joists and deck, Deep-Dek Composite, and Versa-Dek Composite—can

achieve clear spans of up to 60 feet uninterrupted by support columns. The systems also address the many factors that go into designing a high-performance and efficient structural system for multi-story, multifamily construction, including total floor depth, loads, overall aesthetics, and fire, vibration, and acoustic ratings.

NEW MILLENNIUM | CIRCLE NO. 860

62. \ FOAMULAR NGX INSULATION EDITORS' PICK

Owens Corning's Foamular NGX (next generation extruded) insulation is produced with a proprietary blowing agent that exceeds most regulatory standards without sacrificing product performance. The formulation eliminates use of the hydrofluorocarbon blowing agent HFC-134a and reduces the product's global warming potential (GWP) by 90%. It offers R-5 per inch, handles loads up to 100 psi, and has low water absorption potential. Foamular NGX is the only XPS with a limited lifetime warranty that guarantees a minimum 90% of R-value for the life of the product.

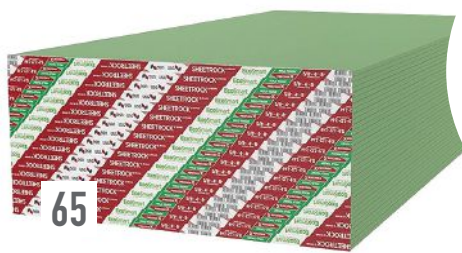
OWENS CORNING | CIRCLE NO. 861



63



64



65



66



67

63. \ CAVITYROCK BLACK INSULATION BOARD EDITORS' PICK

Rockwool's Cavityrock Black is a dual-density insulation board designed to mask the insulation layer with a bonded fleece facing to create a crisp, dark aesthetic in open-joint façades. It eliminates the need for a separate masking layer that can add extra time, materials, and cost to an installation. The fleece material has been designed for exposure to the elements (weather, heat, UV), while maintaining the thermal performance, fire resistance, and moisture control of Rockwool stone wool insulation.

ROCKWOOL | CIRCLE NO. 862

64. \ YIELD-LINK MOMENT CONNECTION EDITORS' PICK

Simpson Strong-Tie's Yield-Link moment connection is designed to simplify and streamline structural steel connections made in the field, without compromising structural strength. The connection requires no field welding, resulting in reduced onsite labor costs, licensing fees, and construction time.

By eliminating field welding, Yield-Link also removes the need for field weld inspections. Fewer fabricated steel elements and field connections are required with Yield-Link, says the maker.

SIMPSON STRONG-TIE | CIRCLE NO. 863

65. \ SHEETROCK BRAND ECOSMART PANELS EDITORS' PICK

USG's Sheetrock Brand EcoSmart Panels feature a noncombustible gypsum core that is encased in 100%-recycled face and back papers that form a high strength-to-weight ratio composite design. The panels meet Architecture 2030 Challenge for Products in three areas: up to 25% less global warming potential (GWP), up to 25% less water used in the manufacturing process, and up to 20% reduction in transportation fuel energy. Contains 100% USDA certified biobased content and up to 94.6% recycled content.

USG | CIRCLE NO. 864

66. \ TERRACE FLOATING STAIR SYSTEM

Viewrail's Terrace floating stair system has no visible means of support as it

rises from one floor to the next. Terrace treads are connected to the riser with no nosing and no exposed metal. The staircase is pre-cut and pre-drilled so there is no need for onsite welding and drilling. The box treads come in Hard Maple, Red Oak, Wheat Oak, White Oak, Walnut, American Cherry, and Hickory. Terrace railing options include clear glass, cables, and rods.

VIEWRAIL | CIRCLE NO. 865

67. \ STEEL FRAME MAGNETIC DOOR KIT 3070 EDITORS' PICK

This self-closing magnetic door fits standard 3x7-foot commercial steel frame doors to maintain a better dust seal during reconstruction and renovation projects. Magnetic strips snap the door panel directly onto the steel frame of the doorway. The strong self-closing magnets allow workers hands-free access to their jobsite while maintaining the dust seal. The ZipWall Steel Frame Magnetic Door Kit 3070 features a flame-retardant door panel and a clear plastic window.

ZIPWALL | CIRCLE NO. 866



68

68. \ SCHLAGE CONTROL MOBILE-ENABLED SMART LOCKS

Allegion's Schlage Control mobile-enabled smart locks (bit.ly/3az5YR0) come with Bluetooth mobile credential compatibility for multifamily properties. Kastle Systems and STRATIS, two independent multifamily ecosystem providers, have been integrated to the new platform. The design gives property managers greater choice in selecting third-party access management software.

ALLEGION | CIRCLE NO. 867



69

69. \ ROCKWOOD HANDS-FREE DOOR PULLS

To minimize everyday skin-to-surface touchpoints in buildings, ASSA ABLOY offers its Rockwood collection of hands-free door pulls. The arm and foot pulls are easy-to-install, cost-effective options for hands-free door operation. They also complement ADA standards and regulations. The stainless steel pulls can be installed on wood, metal or aluminum doors.

ASSA ABLOY | CIRCLE NO. 868



70

70. \ ACDSV ACOUSTICAL AUTOMATIC SMOKE VENT

This automatic smoke vent provides the highest level of protection against exterior noise intrusion on the market, according to its maker. The Type ACDSV Smoke Vent is designed to provide fire and smoke protection for applications where exterior noise intrusion is undesirable, such as in auditoriums, concert halls, and theaters. It carries an OITC-46 sound rating to guard against low-frequency outdoor sounds such as traffic and airplane noises, and an STC 50 sound rating. The product has also received an ISO-140-18 sound rating when tested against rainfall sound.

THE BILCO COMPANY | CIRCLE NO. 869



71

71. \ AC85 ACOUSTIC CASEMENT WINDOW

The AC85 Acoustic Casement Window from Crystal Window & Door Systems



72

delivers acoustical sound reduction ratings of STC 57 and OITC 46, making it especially suitable for multifamily buildings near airports, rail lines, highways, and heavily trafficked city streets. The aluminum frame window is available in either the combined in-swing/out-swing casement or the fixed-window style.

CRYSTAL WINDOW & DOOR SYSTEMS

CIRCLE NO. 870

72. \ SWITCH TECH ELECTRONIC ACCESS CONTROL TECHNOLOGY

EDITORS' PICK

The Switch Tech platform from dormakaba allows building owners and facility managers to convert traditional mechanical access doors to digital access units in minutes without having to replace the door hardware. The solution involves replacing the mechanical lock cores within the hardware with an electronic lock core—a five-minute process, says the maker. Users then install the Switch Tech mobile app to take full control of the doors. Ideal for retrofitting electronic control into existing doors on interior rooms, closets, and cabinets. Works with all types of locks, including cylindrical and mortise.

DORMAKABA | CIRCLE NO. 871

73. \ PUREVIEW MOVABLE GLASS WALL SYSTEM

The PureView Glass Wall Partition from Modernfold is designed to offer balance between aesthetics, functionality, and durability. PureView includes double-brush top and bottom seals for draft management, and foot-operated face and end panel interconnecting floor bolts for maximum convenience and security. Straight, angled, and segmented configurations are available to fit a variety of space division needs for many architectural settings, including banks, offices, lobbies, interior storefronts, and arena skyboxes. Finish options include anodized aluminum and more than 170 powder coat colors.

MODERNFOLD | CIRCLE NO. 872

73



74. \ STORMDEFEND TTH350 EDITOR'S PICK DOOR SYSTEM

Insulgard Security Products' Storm-defend TTH350 is the first glazed aluminum door system certified by UL to meet critical standards for use in tornado and hurricane storm shelters mandated by the 2015 International Building Code, including in the 250-mph wind zone. The door also meets UL 752 levels 1-3 for bullet resistance. It is available as a single or double unit. The TTH350 can be paired with the company's line of Stor-

74



stormdefend windows to create brighter, more welcoming shelter spaces than the bunker-like storm shelters of old.

INSULGARD SECURITY PRODUCTS | CIRCLE NO. 873

75. \ SL84 FOLDING GLASS EDITOR'S PICK WALL SYSTEM

With a frame profile intersection of just 99mm (3⁷/₈ inches), the SL84 aluminum framed system is the

75



slimmest folding glass wall on the market. It is also one of the most thermally efficient aluminum-framed systems available. Its patented Bi-ionic Turtle thermal break utilizes continuous seals along the face of each panel frame, and two levels of insulating thermal breaks provide optimal defense from heat or cold. Maximum panel sizes can reach heights up to 11 feet, six inches and widths up to three feet, seven inches.

NANAWALL | CIRCLE NO. 874

ARCHITECTURAL DOG PARK PRODUCTS



PLAY EQUIPMENT



WATER FOUNTAINS



PET WASTE STATIONS



FUN AGILITY