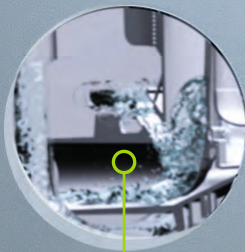


A **FRESH** APPROACH to Sustainable Design



SLOAN® HYBRID URINALS
with Jetrinse® Solution Technology

SLOAN®
Water Connects Us®

The new Sloan® Hybrid Urinals deliver unmatched performance while saving thousands of gallons of water every year. This innovative fixture combines a world-class, multi-patented urinal cartridge with our revolutionary **Jetrinse® Solution Technology** that will keep your urinals and drain lines clean, hygienic, odor-free and clog-free.

Revolutionary Jetrinse
Solution Technology purges
the housing and pipes to
prevent sediment buildup



IMPROVING A PROVEN SOLUTION

In a world of increasing water shortages—and increasingly strict usage regulations—conserving water has never been more important.

Since their introduction, waterfree and 1/8 gpf high-efficiency urinals have helped save thousands of gallons of fresh water every year with each installation. When properly maintained, these fixtures provide efficient removal of liquid waste with no odor or clogs.

The challenge is, however, that improper or infrequent maintenance can lead to the buildup of solids in the drain line, which leads to reduced flow and bad-smelling restrooms. As a result, many customers are not satisfied and believe that these high-efficiency urinals don't live up to expectations.

Now, there's a new solution that combines the efficiency of waterfree urinals with the functionality of conventional flush urinals.



CARTRIDGE TECHNOLOGY

Sloan® Hybrid Urinals feature a multi-patented cartridge, with Falcon Waterfree Technology, for safe, long-lasting, low-odor performance while saving tens of thousands of gallons of water every year. Since the technology was introduced in 2004, there have been several improvements incorporated into the design based on feedback from customers. The latest design follows that same path and includes six all-new features to provide optimal performance.



Simplifies maintenance and optimizes cartridge effectiveness



Keeps pipes and housing cleaner—The patented flexible pour spout combines with a modified cartridge outlet to concentrate and redirect the exiting urine. This significantly increases its exit speed, which helps keep the housing and pipes cleaner.



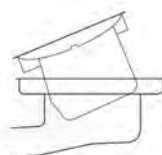
Reduces splashback—An integrated diverter shield reduces splashing while helping prevent debris from entering the cartridge.



Greener footprint—The new cartridge uses 20% less material than previous models, making it even more environmentally friendly.



Reduces odor—The patented cartridge features a reduced surface area that eliminates space for bacteria growth.



Maintenance indicator—The indicator lets you know when it's time to replace your cartridge.



Retains sealant better—A new diverter combines with the internal baffle to help retain sealant, even if a bucket of water is accidentally dumped into the urinal.

EFFICIENCY WITH A DIFFERENCE

The Sloan® Hybrid Urinal doesn't use water to eliminate urine, and there's no need for maintenance personnel to manually clean or rinse the housing and drain line.

The difference occurs behind the scenes with our breakthrough Jetrinse™ Solution Technology. Every 72 hours, the system automatically purges the housing and pipes, rinsing them thoroughly to prevent the buildup of sediment.

The result is clean, odor-free operation, with virtually no maintenance aside from typical wipedowns and cartridge changes.

HOW JETRINSE SOLUTION TECHNOLOGY WORKS



Water is supplied to the back of the housing through a solenoid valve and air gap device.

The water is directed through a nozzle against the cartridge, powerfully redirecting it down the housing and drain line.

The solenoid valve is programmed to inject approximately one (1) gallon of water every 72 hours.

An infrared switch, discreetly located underneath the fixture, allows maintenance personnel to manually operate the Jetrinse system during cartridge changes to confirm its operation.



HYB-4000

SLOAN® HYBRID URINAL SPECIFICATIONS

	HYB-1000	HYB-4000	HYB-7000
Code Number	1001020	1004020	1007020
Nominal Dimensions	25 ⁷ / ₈ " x 16 ⁵ / ₈ " x 14 ³ / ₈ " 651mm x 422mm x 365mm	22 ⁵ / ₈ " x 15 ³ / ₈ " x 14" 575mm x 391mm x 356mm	21 ⁷ / ₈ " x 12 ³ / ₄ " x 14 ⁵ / ₈ " 555mm x 325mm x 370mm
Approximate Weight	68 lbs	43 lbs	54 lbs
Jetrinse™ Water Supply		3/8" NPT	
Drain Connection		2" NPT	
ADA Compliant		Yes	
Certification		IAPMO	
Manual Jetrinse Activation		Infrared switch	
Urinal Construction		Vitreous china	
Urinal Operation		Waterfree	
Jetrinse Operation		1 gallon per 72 hours	
Power		6V lithium battery	



HYB-7000



HYB-1000

OPTIONS TO FIT YOUR NEEDS

Sloan® Hybrid Urinals come in three designs to meet your specifications and requirements. Ideal for a wide range of applications, the Hybrid Urinal line can deliver exceptional performance and outstanding savings for:

- Healthcare facilities
- Restaurants and hotels
- Stadiums
- Schools and universities
- Transportation terminals
- Office buildings

Presents a clean, elegant and efficient appearance styled to reflect your dedication to sustainability

sloanvalve.com/hybrid | 800.982.5839



Sloan Headquarters
10500 Seymour Avenue
Franklin Park, IL 60131
U.S.A.

©2015 Sloan Valve Company. All Rights Reserved. Printed in the USA.
The Jetrinse™ and all other Sloan brands and products are trademarks of Sloan Valve Company.